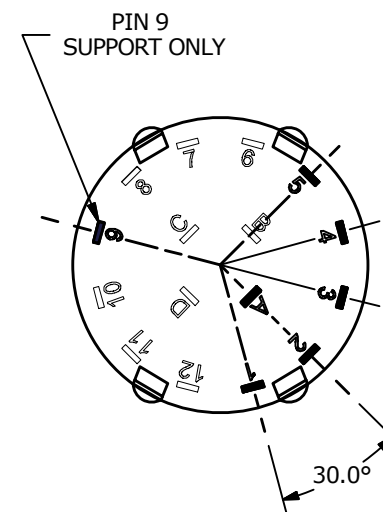
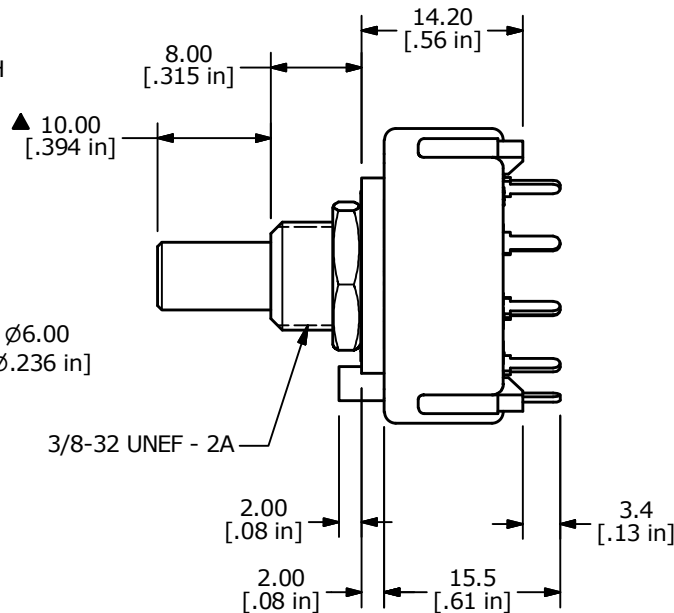
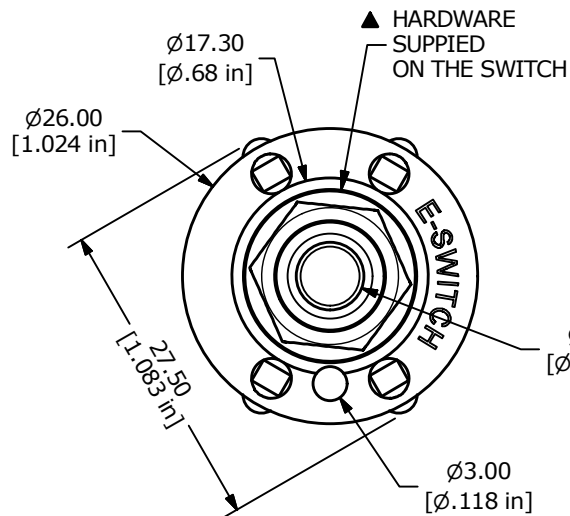
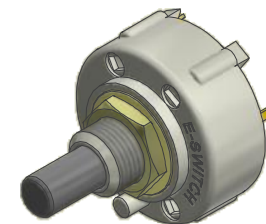
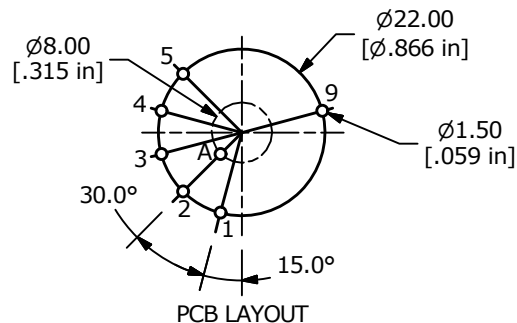


CONTACT CONFIGURATION
TIMING (BBM) NON-SHORTING



- NOTE:
1. ALL DIMENSIONS IN MM[INCH].
 2. GENERAL TOLERANCE: X.X = ± 0.4
X.XX = ± 0.25
 3. TERM. NUMBERS FOR REFERENCE ONLY.
 - ▲ 4. CONTACT MATERIAL: SILVER
 5. CONTACT RATING: 125V AC 0.3A
 6. CONTACT RATING (NON-SWITCHING): 5A
 7. OPERATING FORCE: 0.8 ± 0.3kgf.cm
 8. OPERATING TEMP: -10°C to 70°C
 - ▲ 9. CIRCUIT SP: 5 POSITION 30° INDEX.
 10. DIELECTRIC STRENGTH: 500V AC-1Minute
 - ▲ 11. HARDWARE SUPPLIED ON SWITCH:
STOP RING, LOCKWASHER, HEXNUT
 12. ▲ DENOTES CRITICAL PARAMETER.



A	23505	RELEASED FOR PRODUCTION	8/7/18	MW
REV	PCR NO	DESCRIPTION	DATE	BY

TITLE KC15B10.001NPS				
SCALE	DATE	DR	DWG	REV
3:2	8/2/2018	MW	G510616	A

THE INFORMATION CONTAINED IN THIS DOCUMENT IS PROPRIETARY TO E-SWITCH AND IS NOT TO BE COPIED OR TRANSFERRED